

FREEHOLD



House - Semi-Detached (EPC Rating: C)

71 DEANS WAY, EDGWARE, HA8 9NH

Offers In Excess Of

£700,000

SPACE
RESIDENTIAL

4 2 2 C

4 Bedroom House - Semi-Detached located in Edgware

Space Residential are delighted to present this sensibly laid-out and extended family-sized 4-bedroom home located just off Farm Road on Deans Way.

On entering the house through the porch, a generous hallway awaits with a guest w.c. leading into a large through lounge/dining room and a modern eat-in breakfast room with a fabulous modern wrap-around kitchen, incorporating a sit-up breakfast bar and a plethora of storage units and modern integrated appliances.

Stairs lead to the first floor, where there are 2 double bedrooms, both with fitted wardrobes, and a single 3rd bedroom (currently utilised as an office) and a family bathroom encompassing a bath and separate shower cubicle.

The loft has also been converted to provide a large, airy master bedroom with further eaves storage and a private en-suite shower room with a W.C. and sink.

To the rear, the garden has a tiled patio, a grassed area, side access to the front, and a purpose-built outhouse/summer house offering an ideal work-from-home office/gym or an additional storage room.

The front driveway has ample space for several cars off-street as well as including an electric charger.

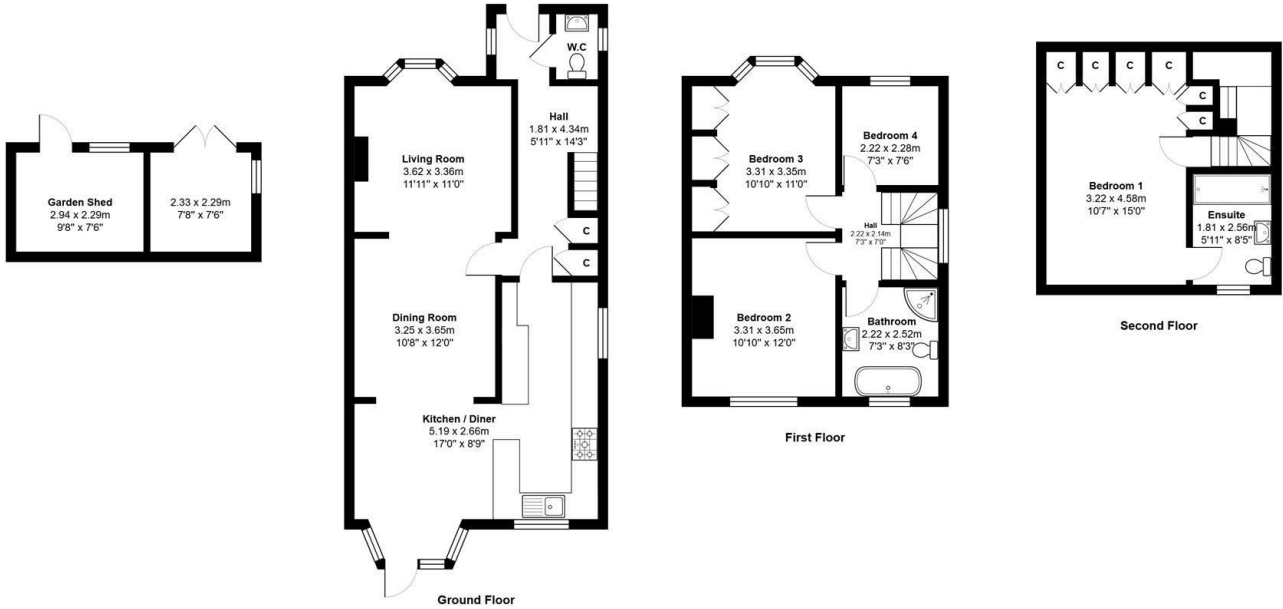




SPACE RESIDENTIAL | 155 HALE LANE, HA8 9QW



SPACE RESIDENTIAL | 155 HALE LANE, HA8 9QW

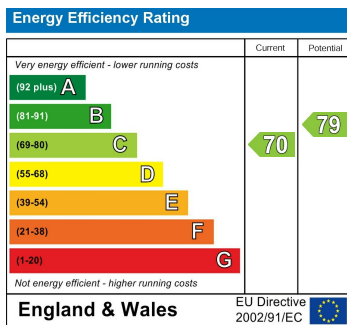


Total Area: 143.8 m² ... 1548 ft²
 All measurements are approximate and for display purposes only

Council Tax Band

E

Energy Performance Graph



Call us on

0208 906 2222

info@spaceresidential.com
spaceresidential.com

Agents Note: Whilst every care has been taken to prepare these particulars, they are for guidance purposes only. All measurements are approximate and are for general guidance purposes only and whilst every care has been taken to ensure their accuracy, they should not be relied upon and potential buyers are advised to recheck the measurements.